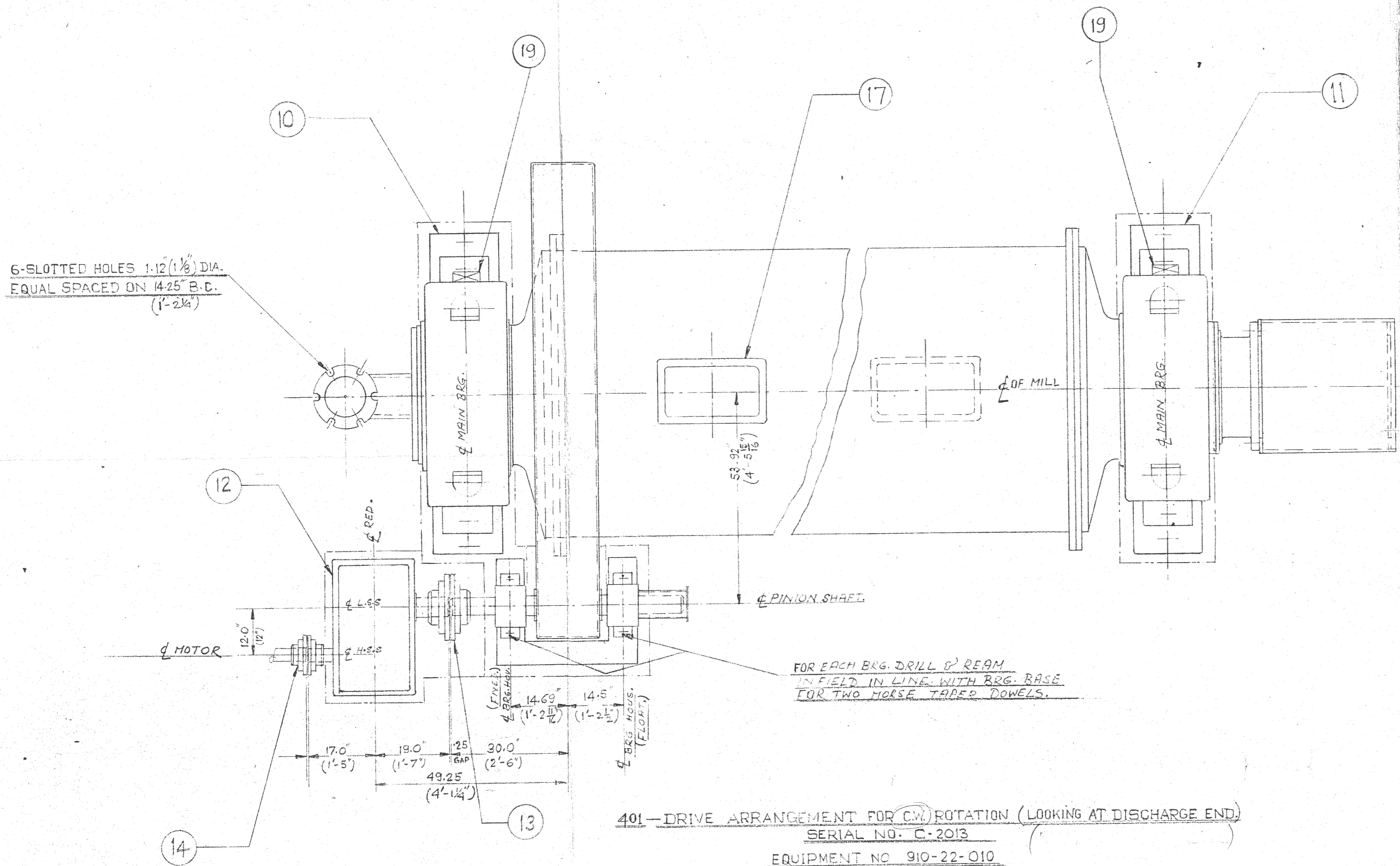
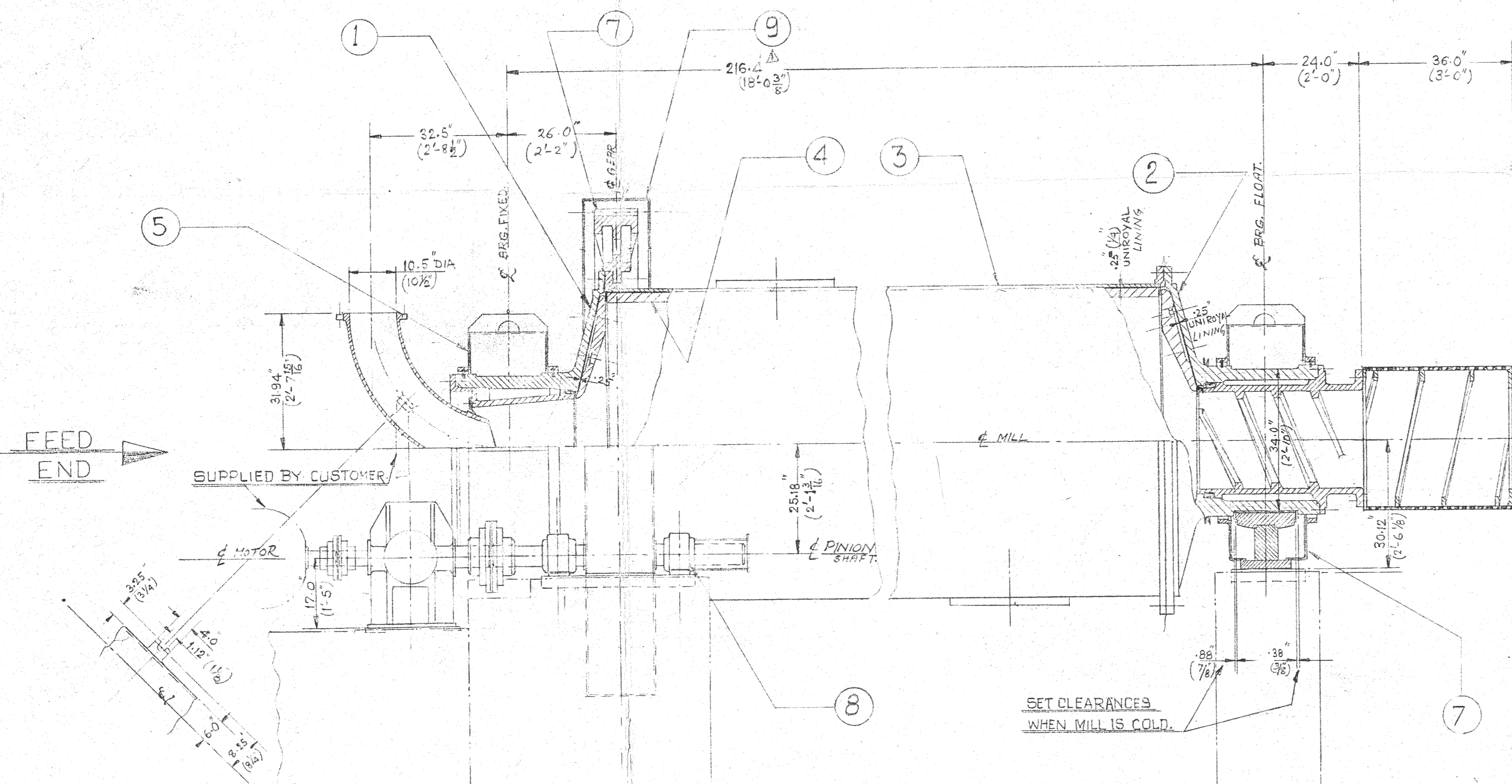


ITEM NO.	DESCRIPTION	QTY.
1	FEED END ASSEMBLY (INCL. LINERS)	2756
2	DISCHARGE END ASSEMBLY (INCL. LINERS)	2756
3	SHELL ASS'Y.	2500
4	SHELL LINER ASS'Y.	2600-6
5	MAIN BRG. ASS'Y. (FEED END)	1000
6	MAIN BRG. ASS'Y. (DISCHARGE END)	1000
7	GEAR R.H. HELIX	6010
8	PINION SHAFT ASS'Y. (PINION L.H. HELIX)	6035
9	GEAR GUARD	5050-1
10	MAIN BRG. SOLE PLATE (FEED END)	1110
11	MAIN BRG. SOLE PLATE (DISCHARGE END)	1110
12	REDUCER NH-12 D BROWN	5035
13	COUPLING FALK 17F	5000
14	COUPLING FALK-12F	5000
15	GEAR L.H. HELIX	6010
16	PINION SHAFT ASS'Y. (PINION R.H. HELIX)	6035
17	MANHOLE COVER	0252
18	DISCHARGE END ASS'Y. (FOR C.C.M. BGT.)	2756
19	HIGH PRESSURE LUB. PUMP (MANUAL) WITH LUBRITOL CONT.	

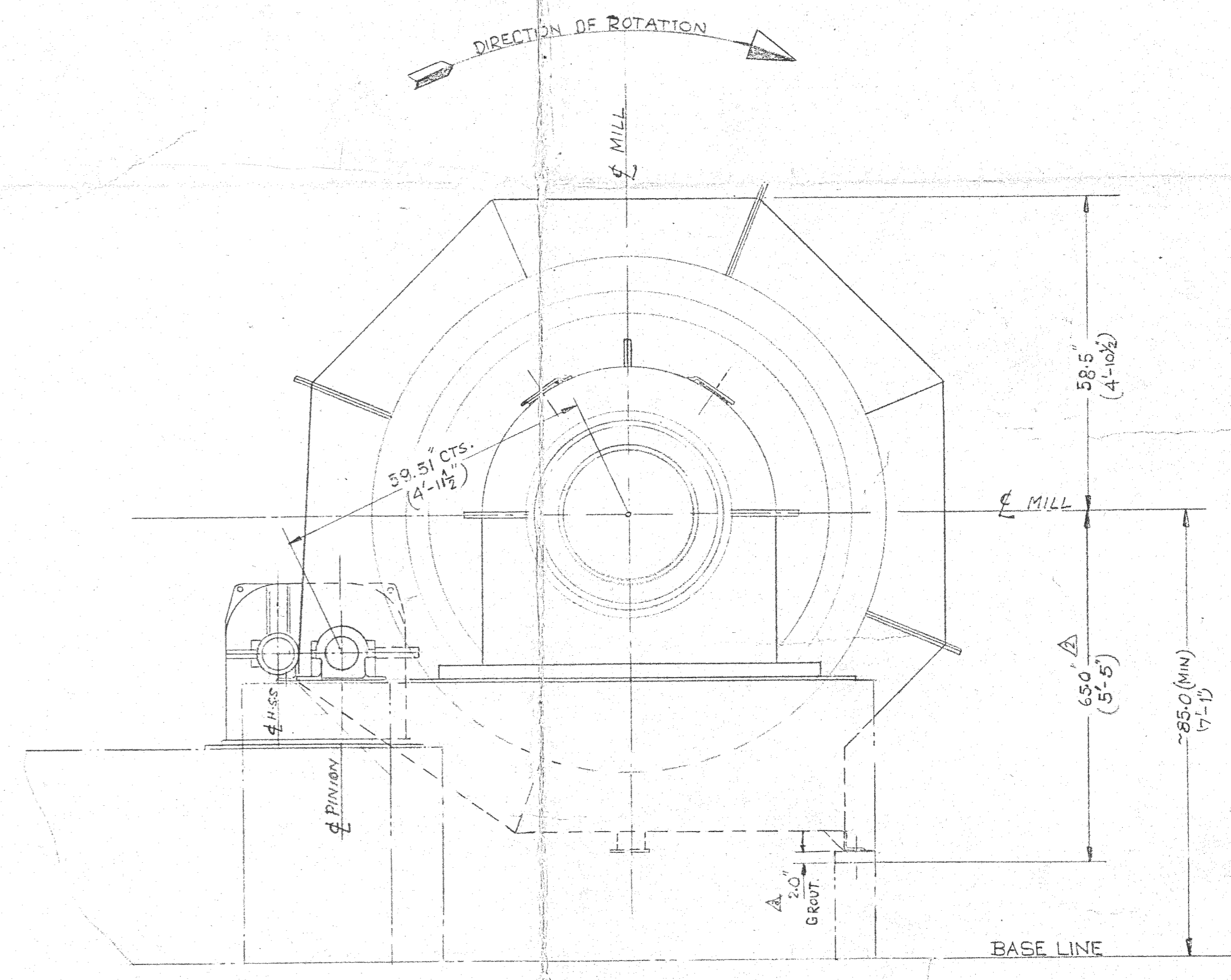


A01 - DRIVE ARRANGEMENT FOR C.W. ROTATION (LOOKING AT DISCHARGE END)
SERIAL NO. C-2013
EQUIPMENT NO. 910-22-010



A02 - DRIVE ARRANGEMENT FOR C.W. ROTATION (LOOKING AT DISCHARGE END)
SERIAL NO. C-2012
EQUIPMENT NO. 910-22-009

FIELD NOTE 1:- CHECK ELEVATION OF MAIN BRG. INSERTS BEFORE ESTABLISHING ELEV. OF MAIN BRG.



GENERAL DATA -
MOTOR - 250 H.P. 1800 R.P.M. (SUPPLIED BY CUSTOMER)
REDUCER - SINGLE REDUCTION HELICAL UNIT; NH-12 (BROWN)
COUPLING - FALK 12F ON H.S.S.; FALK 17F ON L.S.S.
GEAR - T-218; NDP = 2; FACE = 10.5"
PINION - T-18; NDP = 2; FACE = 10.5"
MAIN BRG. - 34.0" X 15.0"
MILL SPEED - 23.4 R.P.M.
PINION SHAFT BRG. - SKF 22222C

BRENDA MINES RD. # BP 910-003
EQUIPMENT NOS. 910-22-009 & 910-22-010

BMDK-910
BP-910-003
CERTIFIED CORRECT FOR CONSTRUCTION
DATE: JUL 2 1968 BY: [Signature]
CANADIAN ALLIS CHALMERS LTD.

BRENDA MINES LTD.
PROJECT OFFICE
JUL 8 1968
RECEIVED

1-8000-7720
2-8028-1052
BRENDA MINE

DEPT.	QUAN.	TOTAL

6'-0" x 14'-0" BALL MILL
GENERAL ARRANGEMENT
SIMILAR TO: 80-550-625 SCALE: 1/4" = 1'-0"

UNLESS OTHERWISE SPECIFIED DIMENSIONAL TOLERANCES & SURFACES COMMERCIAL STOCK SIZES EXCLUDED	DR 63.68 M/C
ONE PLACE DEC ± .050 MACHINED SURFACE	CHD 37.83 J/S
TWO PLACE DEC ± .030 TURNED SURFACE	APPD.
THREE PLACE DEC ± .010	250/
ANGULAR MACHINED SURFACES ± 30'	WT #
CHAMFER & WELD PREPARATIONS ± 30'	SCALE 2:0
SHEET NO.	80-550-780 04

80-550-780 04 CAT. NO. - 3998